

**RUTGERS**

Rutgers Business School  
Newark and New Brunswick

**33:010:458**

**Accounting Information  
Systems**

**Dr. Peter R. Gillett**

**Associate Professor**

**Department of Accounting, Business Ethics and Information Systems**

**Rutgers Business School–Newark and New Brunswick**

## **A.I.S. Class 21: Outline**

- Group Projects Stages 5 & 6
- Learning Objectives for Chapter 9
- Chapter 9 Quiz
- Group Work for Chapter 9
- New ACCESS Functionality
- Ash Accounting

## Group Projects Stages 5 & 6

- Does the software implement the design:
  - \* Are all the specified tables implemented?
  - \* Are the primary keys correct (including for link tables)?
  - \* Are the attributes in accordance with the data repository structure?
  - \* Are the relationships as per the REA diagram?
  - \* Are there forms to maintain every (non-event) table?
  - \* Are there forms + subforms to capture every event?
  - \* Are the controls identified in Stage 4 implemented?
  - \* Are there enough reports (in particular, are all the reports in Stage 3 implemented)?

## Group Projects Stages 5 & 6

- Does the software work correctly?
  - \* Are the required switchboard menus implemented?
  - \* Do the switchboard menus run automatically when the database is started?
  - \* Do the switchboard menus work?
  - \* Does ACCESS close on exit from the main switchboard?
  - \* Do any buttons have unanticipated actions?
  - \* Do switchboard forms close correctly as the user moves between them?
  - \* Are ACCESS menus and toolbars eliminated throughout the system?
  - \* Are the tables correctly updated by the forms?

## Group Projects Stages 5 & 6

- Does the software work correctly?
  - \* Are all the link tables correctly updated (e.g., event-event links such as Shipments-Receipts)?
  - \* Does test data on the tables appear to have been entered via the forms or is there invalid data on the tables?
  - \* Are there procedures to update any balance attributes stored on the tables?
  - \* Does data validation work correctly?
  - \* Do the database manipulation buttons work correctly?
  - \* Do the navigation buttons work correctly?
  - \* Do the forms visually distinguish editable from non-editable controls?

## Group Projects Stages 5 & 6

- Does the software work correctly?
  - \* Is the user supported by look-up lists from combo boxes etc. whenever possible?
  - \* Are form and report titles meaningful to the user?
  - \* Are forms and reports attractively presented?
  - \* Have unnecessary labels generated by ACCESS been removed from forms and reports?
  - \* Do reports include the appropriate data from different tables (especially link tables)?
  - \* Are items in reports and queries properly sorted?
  - \* Are reports appropriately totaled?
  - \* Are there any unexpected error messages generated?
  - \* Is the required documentation complete?

## Group Projects Stages 5 & 6

- Additional points to watch for:
  - \* Input Masks
  - \* Validation Rules
  - \* Validation Macros - quantities & amounts
  - \* Text v. Number (& effect on sequence)
  - \* Sorting queries & reports
  - \* Remove fsub labels
  - \* Use Captions to avoid "ObtInQuantity"
  - \* Kill: "Summary for 'Receive#' = 100019 (2 detail records)"
  - \* Naming conventions:  
tblShipments-FinishedGoodsInventory etc.

## **Group Projects Stages 5 & 6**

- Create a directory on your C: drive called C:\AIS
- Copy both your databases there
- Rename them Groupx.accdb and TablesGroupx.accdb respectively  
( $x = 1, 2, \dots, 24$ )
- Link them (or re-link them) as required
- Submit them to me using the Digital Dropbox on Blackboard (be SURE to SEND not just ADD)

## **Learning Objectives for Chapter 9**

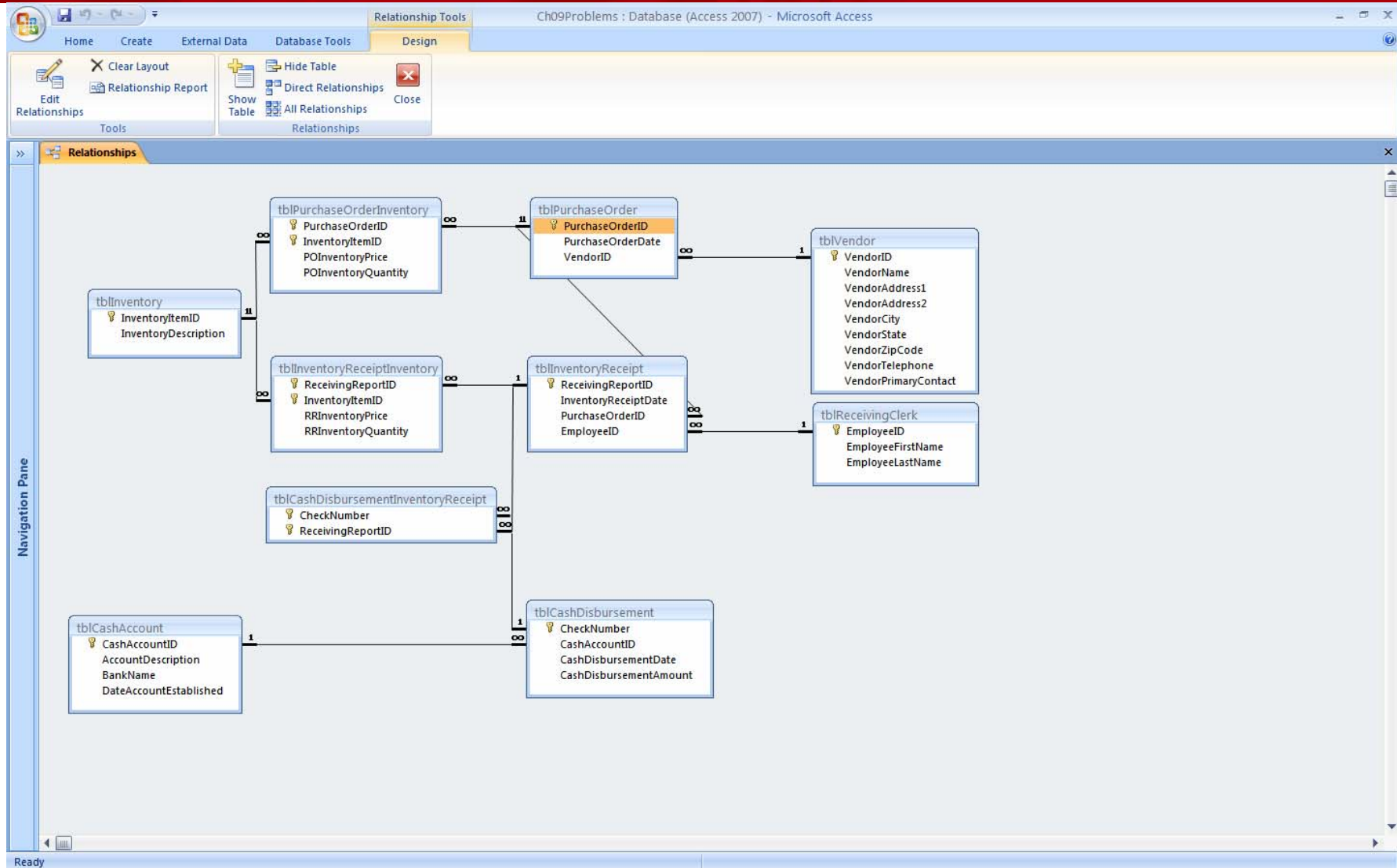
- In this chapter you will learn how to :
  - \* Create a model of the acquisition/payment business process
  - \* Create a Microsoft Access database based on the business process model
  - \* Create controls to enforce business rules
  - \* Create and maintain vendor records
  - \* Create and maintain finished goods inventory records
  - \* Record purchase orders
  - \* Record purchase/inventory receipt information
  - \* Record payments made to vendors
  - \* Produce information for financial statements
  - \* Produce information for internal purposes

## Chapter 9 Quiz

?

## **Group Work for Chapter 9**

- Sketch an REA diagram for the tables discussed in Chapter 9 of Perry, Schneider & Newmark
- Identify at least five ways of using ACCESS introduced in Chapter 9 that we have not yet discussed
- Agree on three questions regarding tables in your cycle that you would like to raise at this time



## **New ACCESS Functionality**

- Importing data from Excel
- Modifying data sources for subforms and forms
- Creating Make-table queries to create and store totals
- Creating Update queries to store totals
- Automating queries using macros
- Adding buttons to forms to run macros
- Using queries as controls
- Purchasing for non-inventory items
- Accounts payable and other reports

## Another ACCESS Function

- **Chr()**
  - \* **Chr(13)** – carriage return – beginning of line
  - \* **Chr(10)** – line feed – new line
  - \* **[Addressline] & Chr(13) & Chr(10) & [City] & Chr(13) & Chr(10) & [State]**

## **Ash Accounting**